

The 954-seat (730 seat orchestra level & 224 seat balcony) Mainstage is a fully serviced performance venue owned and operated by the City of Ottawa. Excellent sightlines, acoustics and a large proscenium stage make the theatre ideal for all types of performances, large presentations and ceremonies.

<b>CONTACT INFORMATION</b>	
<b>Address</b> Ben Franklin Place 101 Centrepointe Drive Ottawa, ON K2G 5K7 www.centrepointetheatre.com	<b>Telephone</b> Administration (613) 580-2701 Box Office (613) 580-2700 Box Office – Toll Free (866) 752-5231 Production (613) 580-2703
<b>Key Contacts</b> Artistic Producer and Manager Allan Sansom (613) 580-2424 x46653 Production and Rental Services, Chief Sean Freill (613) 580-2424 x41527	
<b>UNIONS</b>	
<b>Stage</b> International Alliance of Theatrical Stage Employees (IATSE – Local 471)	<b>Administration</b> Canadian Union of Public Employees (CUPE) Civic Institute of Professional Personnel (CIPP)
<b>GENERAL INFORMATION</b>	
<b>Volunteers</b> Non-Profit organizations have access to the Centrepointe Theatres Volunteer Company (CTVC) Stage Crew. In the absence of available volunteers, IATSE union staff will be hired and charged back at the applicable rates. The Licensee shall provide the Volunteer Stage Crew with appropriate meals and refreshments during the engagement at scheduled times as advanced by Centrepointe Theatres Production Services.	
<b>Haze and Theatrical Smoke</b> Productions using haze and smoke must inform Centrepointe Theatres (CT) in advance of their event. WHMIS documentation (MSDS) must be provided to CT Production Services.	
<b>Pyrotechnics</b> Productions using pyrotechnic special effects must apply for and receive a permit in accordance with City Of Ottawa bylaw services and obtain authorization from the CT, and the Fire Chief of the City of Ottawa. Operators must hold appropriate certification from the Explosive Regulatory Division of the Natural Resources of Canada.	
<b>Open Flame</b> The City of Ottawa has a No Open Flame policy.	
<b>Theatrical Firearms/Weaponry</b> All firearms, including replica firearms, must be handled in accordance with federal legislation and have advance approval by CT Production Services.	
<b>Maximum Sound Levels</b> Sound levels are to be below 95 dB in order to be at a safe level for the patrons.	
<b>Recording</b> No video and/or audio recording is permitted without prior approval from CT. Additional IATSE fees may apply. For full details on reproduction and broadcasting, please consult the <i>General Terms and Conditions</i> .	
<b>Occupational Health &amp; Safety</b> Smoking is not permitted in Centrepointe Theatres or anywhere on City of Ottawa property. Safety footwear and hard hats as required in accordance with Ontario Ministry of Labour (MOL) regulations. Working at heights in accordance with MOL regulations. Genie Lift cannot be moved while platform is elevated in accordance with defined operating procedures. Fire Curtain will automatically deploy if the need arises, its travel cannot be blocked under any circumstances.	

**STAGE – see attached stage plan**

<b>Stage Surface</b>		
Masonite painted black over plywood sprung floor. Anchoring (screwing) into the floor is not permitted.		
<b>Dimensions</b>		<i>Centre Line</i>
<i>Proscenium Opening</i>		To Stage Right Clear: 10.0 m (33'-0")
Width:	13.6 m (44'-8")	To Stage Left Clear: 9.9 m (32'-6")
Height:	7.9 m (26'-0")	<i>Curtain Line</i>
<i>Ideal Playing Area</i>		To Upstage Wall: 11.4 m (37'-10")
Width:	12.0 m (39'-5")	To Downstage Apron: 4.3 m (13'-9")
Depth (Setline to backdrop):	9.6 m (31'-5")	<i>Stage to High Transfer Area Door</i>
<i>Maximum Floor Area</i>		Maximum width: 3.4 m (11'-1")
Width:	23.0 m (75'-6")	Maximum height: 3.9 m (12'-11")
Depth (apron to back wall):	15.7 m (51'-7")	<i>Rigging</i>
<i>Stairs SL &amp; SR to auditorium floor.</i>		Grid Height: 15.2 m (50'-0")
		<i>Auditorium Floor to stage height:</i> 0.80 m (2'-6")

**ORCHESTRA PIT**

Normally set to stage level to extend Apron.  
 No patron seating possible on pit when lowered to auditorium floor level.  
 Access by stage left stairway or upstage right crossover.  
 Safety net used on opening when pit is in lowered position.

Dimensions (including apron lift section)		Dimensions (apron lift section only)	
Width (SR-SL):	12.0 m (39'-5")	Width (SR-SL):	12.0 m (39'-5")
Length (DS-US):	6.8 m (22'-4")	Length (at Ctr Line):	2.3 m (7'-7")
Depth – Below Stage Floor	3.0 m (9'-11")		
– Below Auditorium Floor	2.2 m (7'-3")		
Accommodated Musicians:	~ 30	Accommodated Musicians:	~ 12

**MASKING**

<p><b>House Curtain (Main)</b> – Permanent on line set 2          1 – Bermuda Blue Velour, 50% fullness          Travel or guillotine          18.3 m wide x 8.5 m high (60'-0" x 27'-10")          Manual Control located SR</p> <p><b>Valance</b> – Permanent on line set 1          1 – Bermuda Blue Velour          Stock trim 5.7 m (18'-9")          18.3 m wide x 3.0 m high (60'-0" x 10'-0")</p> <p><b>Mid-Stage Traveler</b> - Permanent on line set 20          1 – Black Velour, 50% fullness          Travel or guillotine          18.3 m wide x 8.4 m high (60'-0" x 27'-6")          Manual Control located SR</p>	<p><b>Borders</b> - Black Velour, 0% fullness          6 – 18.3 m wide x 2.9 m high (60'-0" x 9'-6")</p> <p><b>Legs</b> - Black Velour, 0% fullness          4 – 2.4 m wide x 8.4 m high (8'-0" x 27'-6")          6 – 3.6 m wide x 8.4 m high (12'-0" x 27'-6")          4 – 5.2 m wide x 8.4 m high (17'-0" x 27'-6")</p> <p><b>Cyclorama</b> – Permanent on line set 45          1 – Cream PVC          18.3 m wide x 8.5 m high (60'-0" x 27'-10")</p> <p><b>Back Drop</b> - Black Velour          4 – 5.2 m wide x 8.4 m high (17'-0" x 27'-6")</p> <p><b>Scrim</b>          1 – Black shark tooth scrim, 56'w x 23' h</p>
--	---

**RIGGING** – see [http://centrepointheatre.com/en/rentals/rentals\\_and\\_tech/index.htm](http://centrepointheatre.com/en/rentals/rentals_and_tech/index.htm) for line set schedule

**Single Purchase Counterweight Fly System**

37 line sets. (11 have permanent use)  
Operated from stage right at deck level.  
Maximum pipe out trim: 14.8 m (48'-7")

**Capacities**

Length of Pipes: 18.3 m (60'-0")  
Pipe Type: Schedule 40 - 1.5" (1.9" OD)  
Arbour Capacity: 590 kg (1300 lbs)

Any production rigging required from high steel must be advanced with CT Production Services.

No rigging from gridiron permitted.

**NOTE:** There are no rigging points downstage of the proscenium wall.

**AUDIO** – additional charges apply for some items

Tour mix position at back of orchestra level, house right. ≈ 76' from Proscenium wall.

House table to bridge seat kills in Row U,V,W Seats 6,8,10,12,14,16. 150' minimum snake run from SL.

Tour consoles patched directly to system processor. Left, Right, Centre & Aux Sub inputs available.

House mix position: Installed in centre, at front of balcony

**FOH PA**

**Left & Right – Flown per side**

3 – Meyer 900-LFC subs (top of array)  
8 – Meyer Leopard Line array  
1 – Meyer UPM-1P

**Centre Cluster**

4 – Meyer UPA-1A

**Front Fill**

4 – Meyer UP-4XP

**Monitors**

12 – EAW MW12 MicroWedge  
2 – EAW SM200iH  
1 – EV Sb760 Subwoofer  
2 – Meyer 650-R2 (Sidefill)  
2 – Meyer CQ-1 (Sidefill)

**Monitor Console & Processing**

1 – Midas H3000 56 (44 mono + 4 stereo)  
5 – Klark DN370 Dual graphic equalizer  
1 – Klark Square One Dynamics  
1 – TC M-One XL  
12 – Crown iTech 5000HD Amplifiers

**FOH Console, Processing & Playback – Front of Balcony**

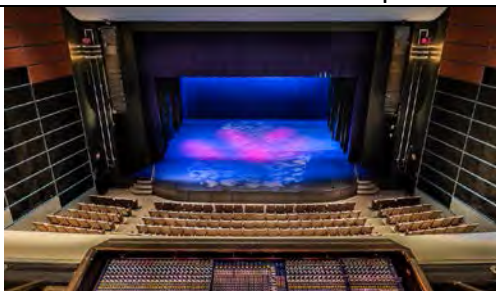
1 – Midas H3000 56 (40 mono + 8 stereo)  
1 – Yamaha SPX990  
1 – TC Electronic M3000  
1 – TC Electronic M-One XL  
1 – TC Electronic D2 delay  
1 – Klark DN514 Quad Gate  
1 – Klark DN500 Stereo Comp/Limiter/Expander  
2 – Klark DN504 Quad Compressor  
1 – Klark DN370 Dual graphic equalizer (L & R O/P)  
3 – Ashly GQX-3102 stereo graphic equalizer  
2 – Denon DN-C620 Single Pro CD Player  
1 – Denon DN-M2300R Dual Minidisk Player

**FOH Console, Processing & Playback – Control Booth**

1 – Yamaha LS9-32  
2 – JBL 4406 monitors powered by Bryston 2B  
1 – Stanton C.502 Dual CD/MP3 Player

**Patching**

All house patch points terminate to ADC longframe patchbays in Control Booth. All points can patch to Booth LS9 or FOH Midas console.



Installed FOH mix position in balcony.



House monitor system - available for rental.

<p><b>Microphones and DIs</b></p> <ul style="list-style-type: none"> <li>9 – Shure SM58</li> <li>6 – Shure SM57</li> <li>4 – Shure BETA 87A</li> <li>1 – Shure BETA 91</li> <li>1 – Shure Beta 52A</li> <li>1 – Shure KSM32/CG</li> <li>3 – AKG 414</li> <li>1 – AKG D112</li> <li>1 – EV RE20</li> <li>2 – Beyers M160</li> <li>2 – Neumann KMS 105</li> <li>5 – Neumann KM-84i</li> <li>3 – Neumann KM184</li> <li>2 – Sennheiser e609S</li> <li>3 – Sennheiser e904 with drum clip</li> <li>2 – Sennheiser 504D with drum clip</li> <li>4 – Sennheiser MD421</li> <li>2 – Sennheiser MD441</li> <li>4 – Crown PCC 160</li> <li>2 – Apex 175 Shotgun</li> <li>1 – Shure SM99 Podium mic</li> <li>4 – BSS AR116 Active DI box</li> <li>2 – BSS AR-133 Active DI box</li> <li>2 – Radial J48 Active DI box</li> <li>8 – Radial JDI Passive DI box</li> <li>1 – Whirlwind PCDI DI box</li> </ul>	<p><b>Wireless</b></p> <ul style="list-style-type: none"> <li>2 – Shure UHF-R UR4D Dual Receiver (H4 Band 518-578 MHz)</li> <li>4 – Shure UR2/BETA 87A wireless handheld</li> <li>2 – Shure UR1 wireless body pack transmitters with Shure WL184 lav mic or instrument cable.</li> <li>2 – Shure UA874WB antennas</li> </ul> <p><b>Stands</b></p> <ul style="list-style-type: none"> <li>11 – Atlas MS-20 with boom</li> <li>13 – Atlas MS-12CE with boom</li> <li>2 – Atlas MS25 with boom</li> <li>8 – Atlas TS-8 Short stands with boom</li> <li>3 – 6” Table Top Stand</li> </ul> <p><b>Intercom System</b></p> <p>WIRELESS</p> <ul style="list-style-type: none"> <li>1 – Clearcom Freespeak II 1.9 GHz with 4 wireless belt packs</li> </ul> <p>WIRED</p> <ul style="list-style-type: none"> <li>1 – Clearcom MS702 base station (2 channel)</li> <li>1 – Clearcom PM120A SM station (in booth)</li> <li>3 – Clearcom RS-601 belt packs (1 channel)</li> <li>4 – HME WL742 Speaker stations (2 channel)</li> <li>12 – Clearcom CC-95 headsets (single muff)</li> </ul> <p><b>Assistive Listening System</b></p> <ul style="list-style-type: none"> <li>Brahler MSI-8d IR Transmitter with IR Radiator</li> </ul>
---	--

<b>TOUR PRODUCTION POWER SOURCES – on stage</b>			
	Lighting	Audio	Video/Motors
LOCATION:	Mid-stage left	SL Proscenium Wall	SR Proscenium Wall
CAPACITY:	400 Amp	200 Amp or 100 Amp	60 Amp
PHASES:	3∅	3∅	3∅
VOLTAGE:	ALL 120/208 volt, 60 Hz, 5 wire		
CONNECTORS:	Cam-Loc E1016 Female (no reversals on neutral or ground)		

<b>TOUR PRODUCTION POWER SOURCES – in Loading Dock</b>			
LOCATION:	Loading Dock A wall	Shore Power – Dock A	Shore Power – Dock B
CAPACITY:	400 Amp	50 Amp	50 Amp
PHASES:	3∅	2∅	2∅
VOLTAGE:	120/208 volt, 60 Hz	120/240 volt, 60 Hz	120/240 volt, 60 Hz
CONNECTORS:	Cam-Loc E1016 Female	14-50R	14-50R

**LIGHTING** – see [http://centrepointheatre.com/en/rentals/rentals\\_and\\_tech/index.htm](http://centrepointheatre.com/en/rentals/rentals_and_tech/index.htm) for Rep LX plot

The Mainstage is equipped with a pre-hung and coloured house lighting plot.  
The house lighting plot must be restored at the production’s expense if any changes are made.

**Console**

1 – ETC GIO (2048 outputs)  
with 2 x 20 Fader Wings  
and wireless NET3RFR remote

**Dimmers**

4 – ETC Sensor3 96 channel racks  
All wired dimmer per circuit (2.4kW)

**Circuits**

354 – 20A Twistlock (NEMA L5-20)

**Control Protocol :**

ETC sACN/eDMX Network  
Additional Gateways available.

**Booms**

8 – Custom booms 3.35 m (11')

**Floor Bases**

8 – Black wooden floor bases

**Hazer**

2 – Ultratec Radiance Hazer with fan

**Fogger**

2 – Martin Jem ZR44

**Followspots**

2 – Strong Super Trooper II 2 kW XBO  
(installed at back of balcony HL & HR)

**Mirror Ball**

1 – 20” mirror ball with 1 RPM motor

**Fixture Inventory**

Type	Total Inventory	Used in Stock Plot	Available
ETC Source Four - 10°	4	4	0
ETC Source Four - 19°	36	36	0
ETC Source Four - 26°	6	2	4
ETC Source Four - 36°	0	0	0
ETC Source Four - 50°	9	8	1
ETC Source Four - 15-30° Zoom	10	10	0
Colortran 10°	18	14	4
Colortran 20°	20	4	16
Colortran 30°	26	20	6
Colortran Zoom-Ellipse	4	4	0
Altman 6x9	20	4	16
1k Fresnel	40	36	4
2K Fresnel	12	12	0
Colortran Far Cyc - 3 CELL	7	7	0
PAR 64	70	34	36
Martin MAC700 Profile	4	4	0
	<b>286</b>	<b>199</b>	<b>87</b>

**For Focus:** Genie PLI-24 Personnel Lift 24' (AC Powered)

NOTE: OH&S requires that lift platform must be lowered before moving.

**VIDEO – no projector available**

**Projection Screen**  
 1 – Draper Cinefold 4.88 m x 3.05 m (16'-0" x 10'-0") with Fast Fold flyable truss frame.  
 Rear projection surface

**Miscellaneous Equipment**

Some of the following equipment is shared between Centrepointe Mainstage and the Studio Theatre. Please inquire about availability with Production Services during show advance.

<p><b>Pianos</b> (A=440, mandatory tuning required)          9' Yamaha CFIII Concert Grand Piano          6' Yamaha GS6 Grand Piano</p> <p><b>Orchestra</b>          73 – Black Orchestra Chairs (padded, no arms)          46 – Black Music Stands          41 – Music Stand Lights          1 – Conductor Podium 0.9m x 0.9m (3'x3')</p> <p><b>Audio Equipment</b>          1 – Whirlwind PressPower2 Media Box          3 – Yamaha MS202II Monitor Speakers          2 – QSC K8 Powered Speakers</p> <p><b>Podium</b>          2 – Wood Podium</p> <p><b>Pipe &amp; Drape kit</b></p>	<p><b>Risers</b>          Black plywood lids on folding bases          5 – 1.2m x 2.4m x 0.15m (4' x 8' x 6")          2 – 1.2m x 2.4m x 0.41m (4' x 8' x 16")          5 – 1.2m x 2.4m x 0.46m (4' x 8' x 18")          5 – 1.2m x 2.4m x 0.76m (4' x 8' x 30")</p> <p><b>Dance Floor</b>          Rosco Reversible Black / Gray          5 Rolls – 1.6 m (5¼') x 12 m (40')            60 – Black Masonite 1.2m x 2.4m (4' x 8') sheet</p> <p><b>Other Furniture</b>          4 – Stools ~ 29" high          3 – Black Tables 6' x 2'-6"          2 – Black Tables 6' x 1'-6"</p>
--	---

**BACKSTAGE – floor plans available upon request**

**Greenroom** – one floor up from stage level  
 Sofa, Chairs and Tables

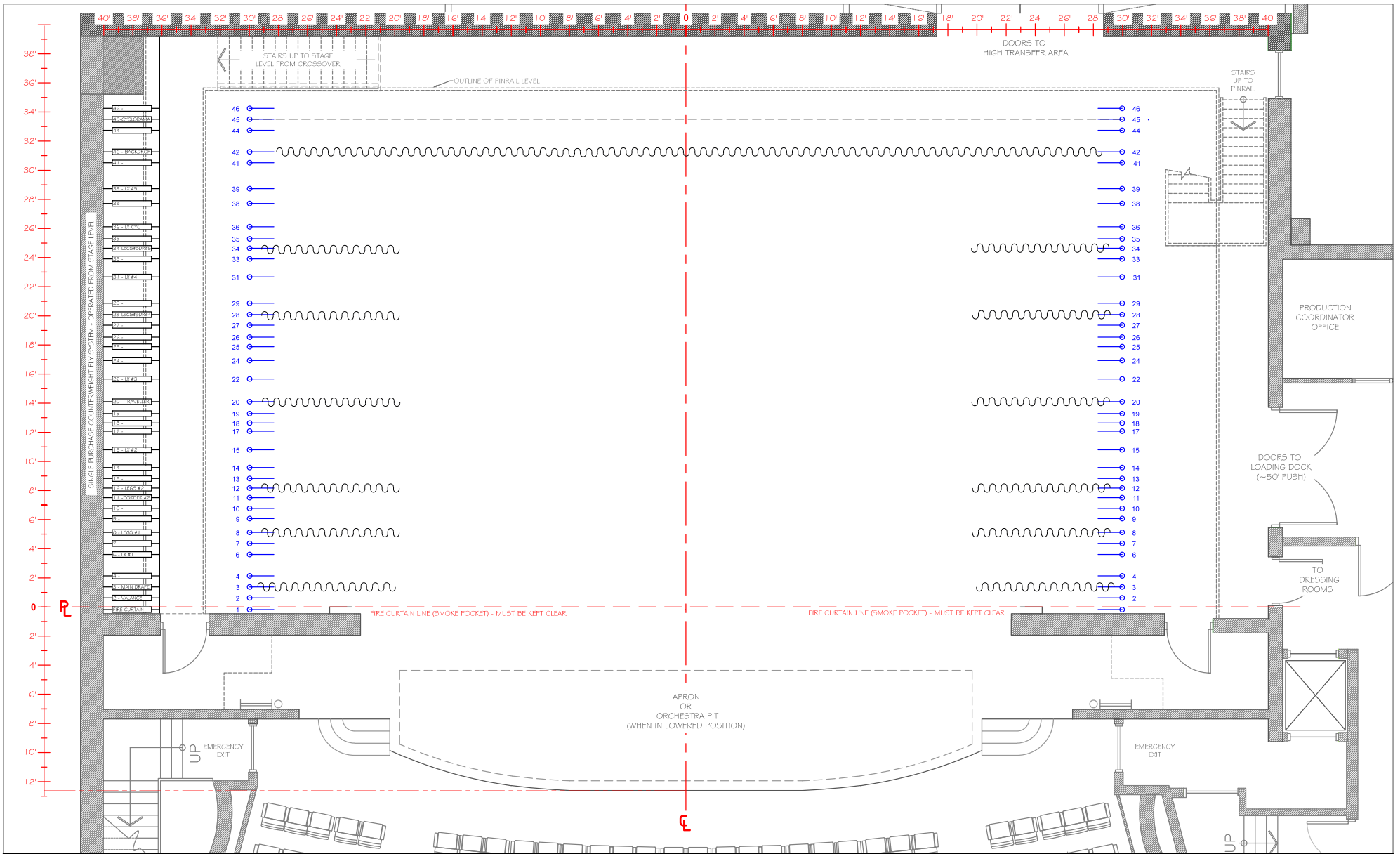
**Catering Kitchen** – one floor up from stage level (additional deposit required)  
 Stove top, Ovens, Coffee maker, Microwave, Fridge, Dishwasher

**Dressing Rooms** – stage left hallway  
 2 – Private dressing rooms with dressing tables, mirrors, clothing racks, shower, toilet and sink.  
 4 – Large dressing rooms with dressing tables, mirrors, clothing racks.  
 Shared showers, toilets and sinks.

**Wardrobe Room** – end of dressing room hallway  
 One high efficiency (HE) washing machine and one dryer. Ironing boards and steamer available.

**Loading Docks**  
 2 – Indoor truck level docks. Can accommodate vehicles up to 22.8m (75') in length.  
 14 m (46') push to Stage Left. All shows must load-in through the LOADING DOCK.  
 Interior Loading Doors: Max. Height 2.7 m (8' 10") Max. Width 2.4 m (7' 10")

**Parking**  
 There is free parking in the main lot of Ben Franklin Place.  
 Parking is not permitted along the loading dock access ramp. Dock access must remain clear.

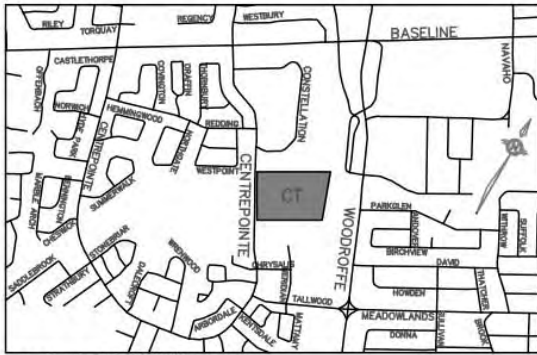


# MAINSTAGE - GROUND PLAN

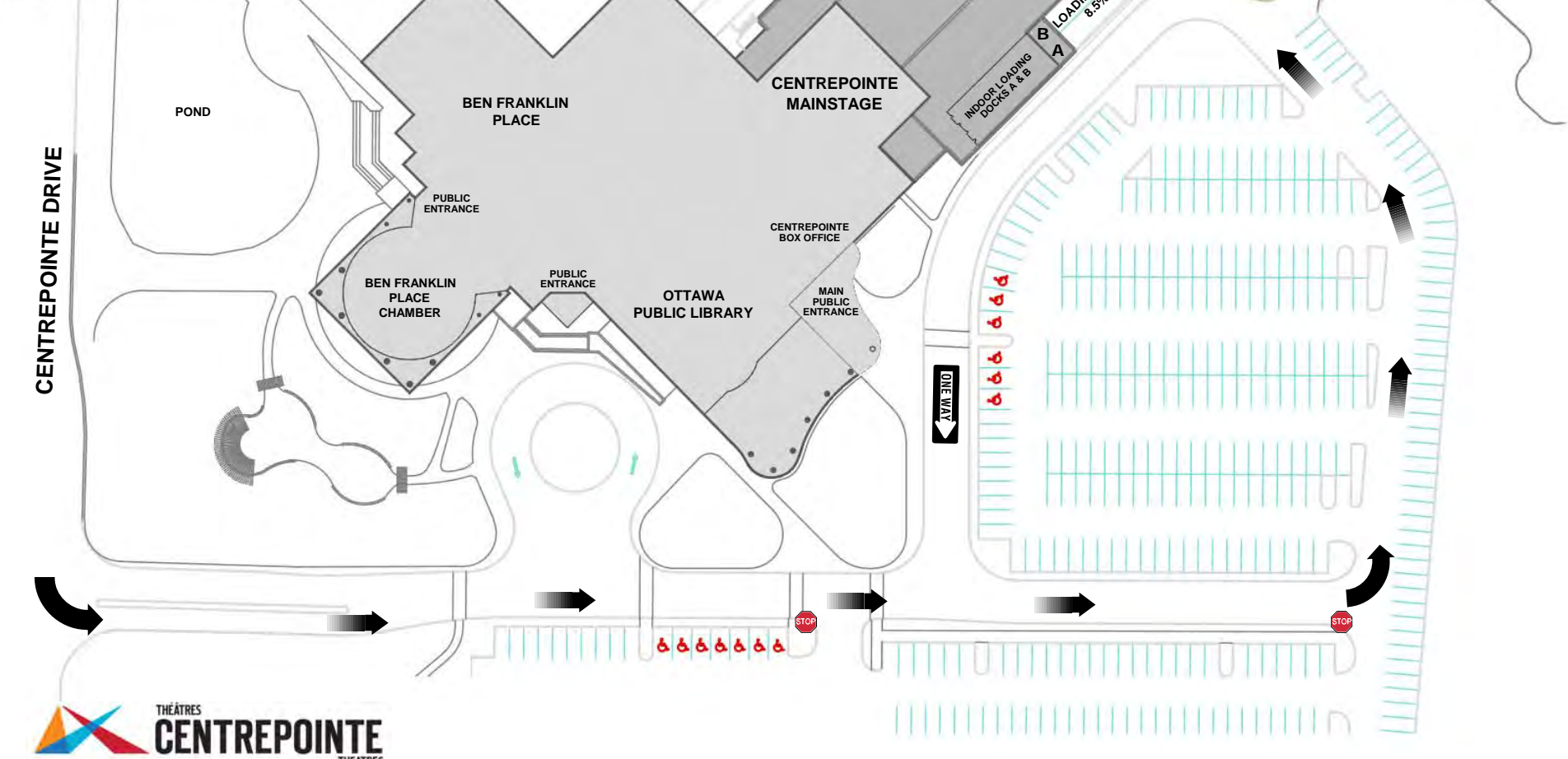
DRAWN BY: ML  
 DATE: SEPT-2015  
 SCALE: AS INDICATED

CENTREPOINTE THEATRES  
 Ben Franklin Place - 101 Centrepointe Drive  
 Ottawa, ON K2G 5K7 613-580-2703





MAP NOT TO SCALE



Ben Franklin Place - 101 Centrepointe Drive  
 Ottawa, ON K2G 5K7  
 613-580-2703 - Production/Stage Door  
 Google Map Link: <http://g.co/maps/km5vn>

**ALL CAST AND CREW TO ENTER BY  
 STAGE DOOR ENTRANCE**

**Follow arrows to access the theatre loading docks  
 for theatre deliveries and pickups.**